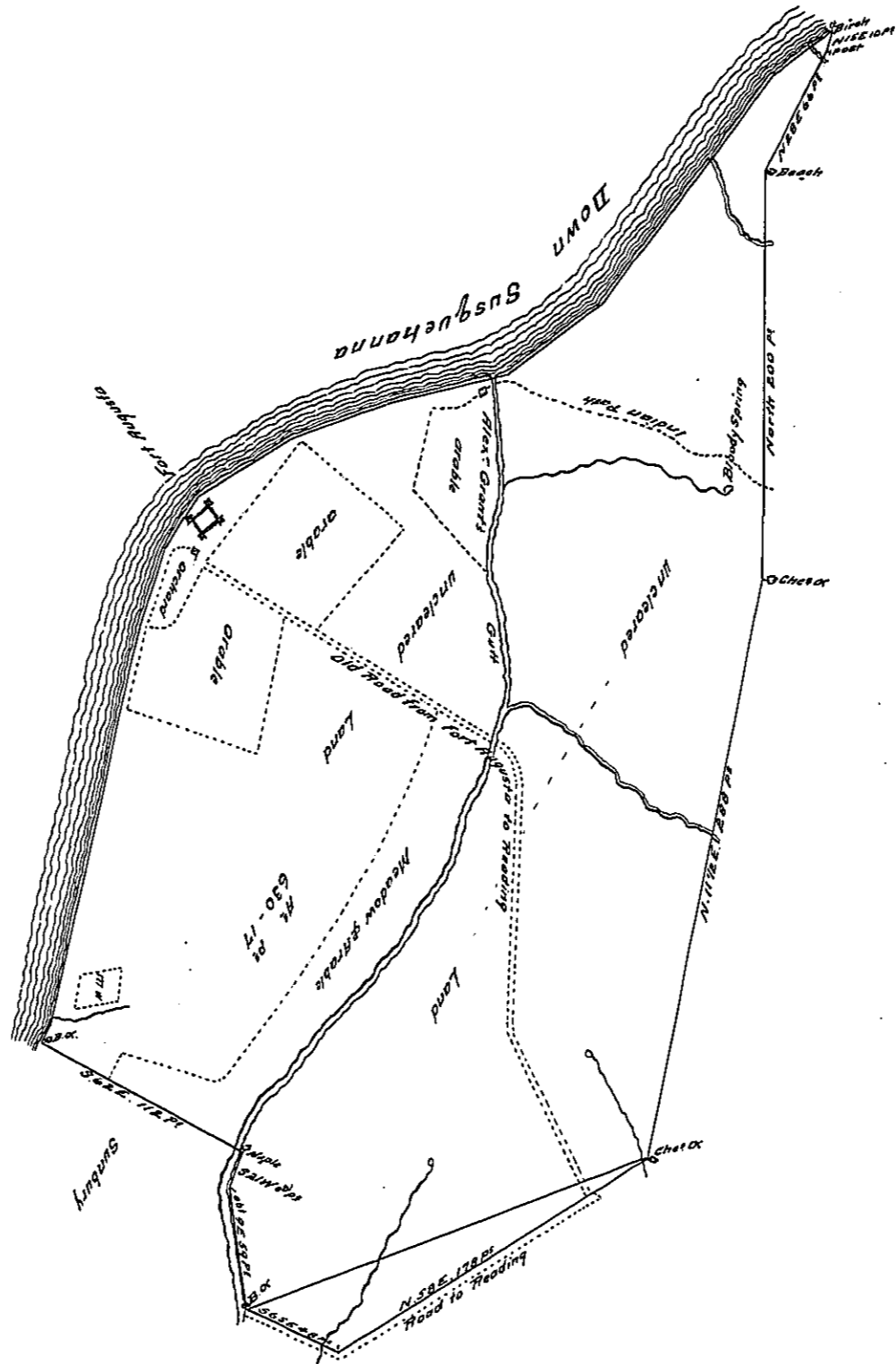


(Endorsement on Back)  
Draft of a part  
of the Manor  
of Pomfret for  
Capt. Samuel Hunter

Traverse of the River from the  
Proprietors Birch Corner Down  
the River to the Box Above Joseph W. Carole.

- 55 W. Pt
- 5 37 W. 140
- 5 53 W. 56
- 5 76 W. 62
- 6 70 W. 50
- 5 52 W. 52
- 5 32 1/2 W. 31
- 5 18 W. 38
- 5 13 W. 200
- 5 26 W. 10 to the Box



In Testimony, That the above is a copy of the original, remaining on file in the Department of Internal Affairs of Pennsylvania, made conformably to an Act of Assembly approved the 16th day of February A.D. 1833, I have hereunto set my Hand and caused the Seal of the said Department to be affixed at Harrisburg this twenty second day of March A.D. 1912.

Henry Honck,  
Secretary of Internal Affairs.